

Baltic Offshore Week  
and  
Classic Yachts Regatta  
29.7 – 1.8.2015  
Airisto Segelsällskap i Åbo r.f.  
In conjunction with NPS, TPS, GK, TTPS, KSSS and SCYT  
Åbo/Turku, Finland

## SAILING INSTRUCTIONS

### 1 RULES

- 1.1** The regatta will be governed by the rules as defined in *The Racing Rules of Sailing*.
- 1.2** No national prescriptions will apply, except Finnish Championships rules apply for 6mR and 8mR classes.
- 1.3** The following rules will apply:
- a) IMS Rule (ORCi only)
  - b) ORC Rating Systems Rule (ORCi only)
  - c) ISAF Offshore Special Regulations, category 4 with following exceptions: Between 22:00 and 05:00 the RRS Part 2 shall in applicable parts be replaced by the International Regulations for Preventing Collisions at Sea (IRPCAS) and all boats shall show the required navigational lights.
  - d) ORCi to the extent of the relevant parts of the Finnish ORC Championship Rules.
  - e) FinLYS Rule (BCM only).
- 1.4** If there is a conflict between languages the English text will take precedence. If there is a conflict between the NOR and the SI, the SI will prevail.

### 2 NOTICES TO COMPETITORS

Notices to competitors will be posted on the web site of the Baltic Offshore Week [www.balticoffshoreweek.org/nor/](http://www.balticoffshoreweek.org/nor/) and from 27.7.2015 on the official notice board located at the Regatta Office at Forum Marinum.

### 3 CHANGES TO SAILING INSTRUCTIONS

Any change to the sailing instructions will be posted before 0900 on the day it will take effect, except that any change to the schedule of races will be posted by 2000 on the day before it will take effect.

### 4 SIGNALS MADE ASHORE

- 4.1** Signals made ashore will be displayed at flag pole near berth B/C.
- 4.2** When flag AP is displayed ashore, '1 minute' is replaced with 'not less than 60 minutes' in the race signal AP.
- 4.3** When flag Y is displayed ashore, rule 40 applies at all times while afloat. This changes the Part 4 preamble.
- 4.4** When signals ashore are intended for a particular class the following flags are shown together with the class flagg:

Class	Flag
<b>ORCi</b>	<b>O</b>
<b>Int5m, 6mR, 8mR</b>	<b>R</b>
<b>Baltic Classic Masters</b>	<b>M</b>

## 5 SCHEDULE OF RACES

Sheduled time for the warning signal for the first race each day and number of races each day:

### 5.1/A ORCi

Wednesday 29.07.15 09:00-21:00 Registration and measurement

Thursday 30.07.15 10:00 Long costal race

Friday 31.07.15 11.00 1-4 races ww/lw

Saturday 01.08.15 10.00 1-4 races ww/lw, 1 coastal race

### 5.1/B int5m, 6mR, 8mR

Wednesday 29.07.15 09:00-21:00 Registration and measurement

Thursday 30.07.15 11:00 1-3 races

Friday 31.07.15 11.00 1-3 races

Saturday 01.08.15 11.00 1-3 races

### 5.1/C Baltic Classic Masters

Wednesday 29.07.2015 09:00-21:00 Registration and measurement

Thursday 30.07.2015 11:00 1 race

Friday 31.07.2015 11.00 1 race

Saturday 01.08.2015 11.00 1 race

5.2 On the last day of the regatta no warning signal will be made after 15:00.

## 6 CLASS FLAGS

Class flags (warning signal) will be:

<b>ORCi</b>		<b>int5m, 6mR, 8mR</b>		<b>Baltic Classic Masters</b>	
<i>Class</i>	<i>Flag</i>	<i>Class</i>	<i>Flag</i>	<i>Class</i>	<i>Flag</i>
ORCi 1	D	8mR	D		D
ORCi 2	E	6mR	E		Alternative starting procedure
ORCi 3	F	int5m	F		is used, SI 11.3

## 7 RACING AREAS

Attachment A shows the location of racing areas.

## 8 THE COURSES

### 8.1/A ORCi

Thursday 30.07.15 10:00 Long coastal race, The long coastal course is shown in Appendix B including description of the marks. Three courses of different distance assigned 1, 2 and 3. Course to be sailed is signalled by a number pennant before the warning signal.

Friday 31.07.15 11.00 1-4 races ww/lw, as shown in Appendix B

Saturday 01.08.15 10.00 1-4 races ww/lw, 1 coastal race, as shown in Appendix B

**8.1/B int5m, 6mR, 8mR**

Thursday 30.07.2015 11:00 1-3 ww/lw races

Friday 31.07.2015 11.00 1-3 ww/lw races

Saturday 01.08.2015 11.00 1-3 ww/lw races

The course is ww/lw as described in Appendix C.

**8.1/C Baltic Classic Masters**

Thursday 30.07.2015 11:00 1 race. The courses for the BCM is described in Appendix D. Course to be sailed is signalled by a number pennant before the warning signal.

Friday 31.07.2015 11.00 1 race

Saturday 01.08.2015 11.00 1 race

**9 MARKS, MARKS of START and FINISH**

**9.1/A ORCi**

The ww/lw course marks are: 1 and 3 orange bouy, 2 red flag bouy. The marks of the coastal courses and finishing line are described in Appendix B.

The starting line will be between a staff displaying a yellow flag on the starting mark at the starboard end and a red flag bouy at the port end of the starting line.

The line defined above also forms the finish line of the ww/lw courses.

**9.1/B int5m, 6mR, 8mR**

The course is ww/lw as described in Appendix B. Marks are: 1 and 3 yellow bouy, 2 a smaller orange bouy.

The starting line will be between a staff displaying a red flag on the starting mark at the starboard end and a red flag bouy at the port end of the starting line. The line defined above also forms the finish line.

**9.1/C Baltic Classic Masters**

The course and its marks is described in Appendix D

The starting marks will be a buoy with red flag at starboard end, and a red buoy near the shore of Viittakari at the port end. The finishing marks will be a red buoy near the shore of Viittakari at the starboard end, and a buoy with red flag at the port end.

**10 AREAS THAT ARE OBSTRUCTIONS**

The following areas are designated as obstructions: 50 meters around a white pole in the course area of the Int5m, 6mR and 8mR classes.

**11 THE START**

**11.1 ORCi**

Races will be started by using rule 26 with the warning signal made 5 minutes before the starting signal. Classes will start with 5 min interval.

**11.2 Int5m, 6mR and 8mR**

Races will be started by using rule 26 with the warning signal made 5 minutes before the starting signal. Classes will start with 5 min interval.

**11.3 Baltic Classic Masters**

The starting area is for the historical reason on the east side of Viittakari (Appendix D), which is the little island where ASS was decided to establish 150 years ago. There is no room for the long starting line, and that's why races start as to partial chasing. The handicap point is about 10 NM from the start. The starting list in the Appendix E.

First boat(s) will be started as to rule 26, and for the other boats the green flag goes up 5 seconds before the starting time and goes down at the starting signal.

The starting line will be between the starting marks (9.1/C).

**11.3** Boats whose warning signal has not been made shall avoid the starting area during the starting sequence for other races. For the BCM yachts there is a recommended waiting area (Appendix D)

**11.4** A boat starting later than 10 minutes after her starting signal will be scored Did Not Start without a hearing. This changes rule A4.

**11.6** If any part of a boat's hull, crew or equipment is on the course side of the starting line during the two minutes before her starting signal and she is identified, the race committee will attempt to broadcast her sail number on VHF channel

ORCi: . VHF 6

Int5m, 6mR, 8mR VHF 8

BCM VHF 72

Failure to make a broadcast or to time it accurately will not be grounds for a request for redress. This changes rule 62.1(a).

## **12 CHANGE OF THE NEXT LEG OF THE COURSE**

**12.1** To change the next leg of the course, the race committee will move the original mark (or the finishing line) to a new position which is signalled only by showing signal flag C with repeating sound. This changes rule 33.

## **13 THE FINISH**

### **ORCi**

**13.1** The finishing line of the coastal races will be at the east side of the Viittakari island and is formed by two red flag boys (Appendix B).

### **Baltic Classic Masters**

The finishing line is between the bouys at the western shore of Viittakari.

**13.2** If the race committee is absent when a boat finishes, she should report her finishing time, and her position in relation to nearby boats, to the race committee at the first reasonable opportunity.

## **14 PENALTY SYSTEM**

**14.1** In the races of the Int5m, 6mR and 8mR classes and the ww/lw races of the ORCi class, rule rule 44.1 is changed so that the Two-Turns Penalty is replaced by the One-Turn Penalty.

The Scoring Penalty, rule 44.3, will apply for the coastal races of the ORCi class and for the BCM classes. The penalty will be 2 places.

## **15 TIME LIMITS AND TARGET TIMES**

**15.1** Time limits and target times are as follows:

<i>Class</i>	<i>Time limit</i>	<i>Mark 1 time limit</i>	<i>Target time</i>
--------------	-------------------	------------------------------	------------------------

<i>ORCi</i>	_____	_____	<i>10-12 hrs for slowest boat in long race</i>
<i>ORCi</i>	_____	_____	<i>2-3 hrs for slowest boat in short race</i>
<i>ORCi</i>	_____	_____	<i>90 min for ww/lw race</i>
<i>6mR</i>	<i>3hrs</i>	<i>60 min</i>	
<i>8mR</i>		<i>60 min</i>	<i>75 min</i>
<i>BCM</i>			<i>5-6 hrs for the slowest boat</i>

If no boat has passed Mark 1 within the Mark 1 time limit the race will be abandoned. Failure to meet the target time will not be grounds for redress. This changes rule 62.1(a).

- 15.2** Boats failing to finish within 20 min after the first boat sails the course and finishes will be scored Did Not Finish without a hearing. This applies only for races on the ww/lw courses. This changes rules 35, A4 and A5.

## **16 PROTESTS AND REQUESTS FOR REDRESS**

- 16.1** Protest forms are available at the race office, located at the Race Office. Protests and requests for redress or reopening shall be delivered there within the appropriate time limit
- 16.2** For each class, the protest time limit is 90 minutes after the last boat has finished the last race of the day or the race committee signals no more racing today, whichever is later.
- 16.3** Notices will be posted no later than 30 minutes after the protest time limit to inform competitors of hearings in which they are parties or named as witnesses. Hearings will be held in the protest room, located at the regatta office, beginning at the time posted.
- 16.4** Notices of protests by the race committee or protest committee will be posted to inform boats under rule 61.1(b).
- 16.6** Breaches of instructions 18, 21, 23, 24, 25, 26 and 27 will not be grounds for a protest by a boat. This changes rule 60.1(a). Penalties for these breaches may be less than disqualification if the protest committee so decides.
- 16.7** On the last scheduled day of racing a request for reopening a hearing shall be delivered
- (a) within the protest time limit if the requesting party was informed of the decision on the previous day;
  - (b) no later than 30 minutes after the requesting party was informed of the decision on that day.
- This changes rule 66.
- 16.8** On the last scheduled day of racing a request for redress based on a protest committee decision shall be delivered no later than 30 minutes after the decision was posted. This changes rule 62.2.

## **17 SCORING**

### **ORCi**

Windward/leeward race results will be determined by corrected times calculated by Constructed Course scoring method.

Offshore race results will be determined by corrected times calculated by Constructed Course scoring method.

The Low Point Scoring System of RRS Appendix A. Points will be multiplied by the appropriate scoring coefficient.

Eight races are scheduled including offshore race, coastal race and six inshore races. Inshore races will be windward/leeward races. The championship is valid if at least 2 inshore races and offshore race are offshore race and coastal race may not be discarded.

### **Baltic Classic Masters**

The handicap procedure is Fin LYS Time on time:

Corrected time = Sailed time \* FinLYS-numerical value.

Three races are scheduled and they are all included in the final score. One completed race constitutes a series.

#### **Int 5m, 6mR and 8mR**

Low point scoring system (RRS App. A) is used as follows:

6mR: 6 races are scheduled. 4 completed races constitute a series. When 5 or more races are completed the worst score is omitted.

8mR: 9 races are scheduled. With 5 completed races the worst score is omitted.

With all 9 completed 2 worst scores are omitted. 3 races constitute a series.

Int5m: 9 races are scheduled. With 5 completed races the worst score is omitted.

With all 9 completed 2 worst scores are omitted. 3 races constitute a series.

## **18 SAFETY REGULATIONS**

**18.2** A boat that retires from a race shall notify the race committee as soon as possible.

## **19 REPLACEMENT OF CREW OR EQUIPMENT**

**19.1** Substitution of competitors will not be allowed without prior written approval of the protest committee.

**19.2** Substitution of damaged or lost equipment will not be allowed unless authorized by the race committee. Requests for substitution shall be made to the committee at the first reasonable opportunity.

## **20 EQUIPMENT AND MEASUREMENT CHECKS**

A boat or equipment may be inspected at any time for compliance with the class rules and sailing instructions. On the water, a boat can be instructed by a race committee equipment inspector or measurer to proceed immediately to a designated area for inspection.

## **21 EVENT ADVERTISING**

Boats shall display event advertising if supplied by the organizing authority.

## **22 OFFICIAL BOATS**

Official boats will be marked as follows: To be decided.

## **23 SUPPORT BOATS**

**23.1** Team leaders, coaches and other support personnel shall stay outside areas where boats are racing from the time of the preparatory signal for the first class to start until all boats have finished or retired or the race committee signals a postponement, general recall or abandonment.

## **24 TRASH DISPOSAL**

Trash may not be thrown in the water but may be placed aboard support or official boats.

**25 HAUL-OUT RESTRICTIONS**

Keelboats shall not be hauled out during the regatta except with and according to the terms of prior written permission of the race committee.

**26 DIVING EQUIPMENT AND PLASTIC POOLS**

Underwater breathing apparatus and plastic pools or their equivalent shall not be used around keelboats between the preparatory signal of the first race and the end of the regatta.

**27 RADIO COMMUNICATION**

Except in an emergency, a boat shall neither make radio transmissions while racing nor receive radio communications not available to all boats. This restriction also applies to mobile telephones.

**28 PRIZES**

Prizes will be given as follows:

Championship medals issued by the Finnish Sailing Federation will be distributed to the first three boats in classes ORC 1, ORC 2 and ORC 3. The number of medals awarded to each boat equals the number of persons sailing on that boat at the same time.

Other prizes and trophies will be awarded at the discretion of the organizers. All medals and prizes will be awarded at the Prize Giving Ceremony and all participants are expected to participate in that ceremony

**29 DISCLAIMER OF LIABILITY**

All those taking part in the regatta do so at their own risk and responsibility. The Organizing Authority, ORC and any other party involved in the organization of the ASS Anniversary regatta 2015 disclaim any and all responsibility whatsoever for loss, damage injury or inconvenience that might occur to persons and materials, both ashore and at sea as a consequence of participation in the event. Each boat owner or his representative accepts these terms by signing entry form. The attention of competitors is drawn to ISAF Part 1 Fundamental Rule 4: A boat is solely responsible for deciding whether or not to start or to continue racing.

**30 INSURANCE**

Each participating boat shall be insured with valid third-party liability insurance with a minimum cover of 500.000€ per event or the equivalent.

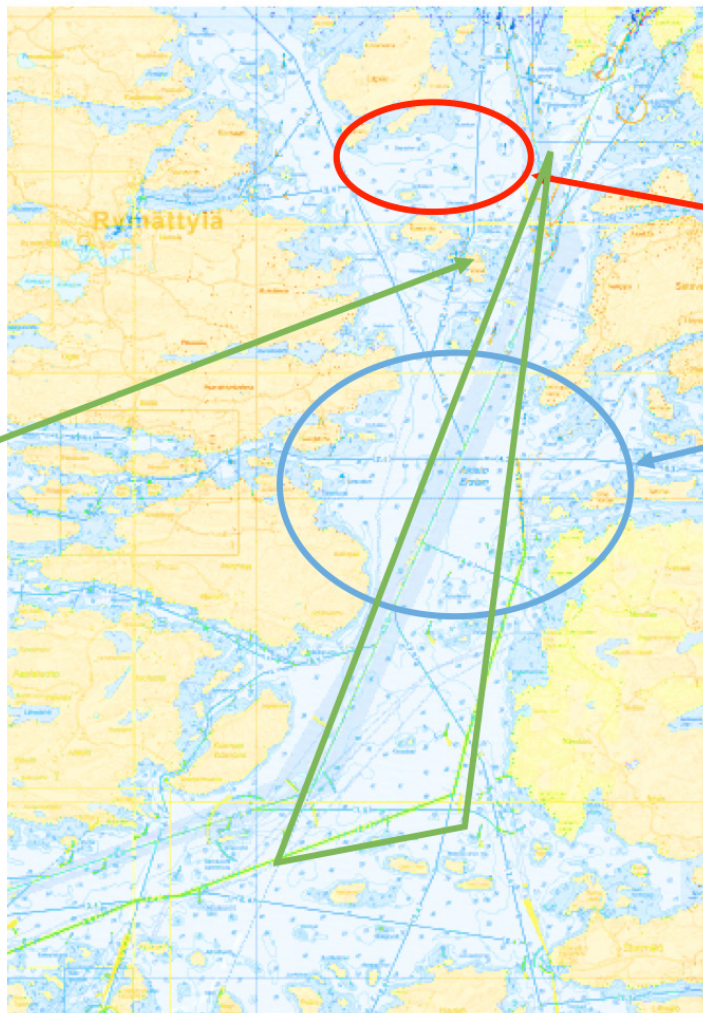
## APPENDIX A –D

- A The race areas
- B The courses for the ORCi classes
- C The course for the int 5m, 6mR and 8mR classes  
(on the last page in section B)
- D The courses for the Baltic Classic Masters yachts



# Courses at Airisto

Course: Baltic Classic Masters



Course: 5m, 6mR, 8mR

Course: BOW

## BOW 2015 ORCi coastal races on Thursday 30.7 (1-3) and Saturday 1.8.2015 (4)

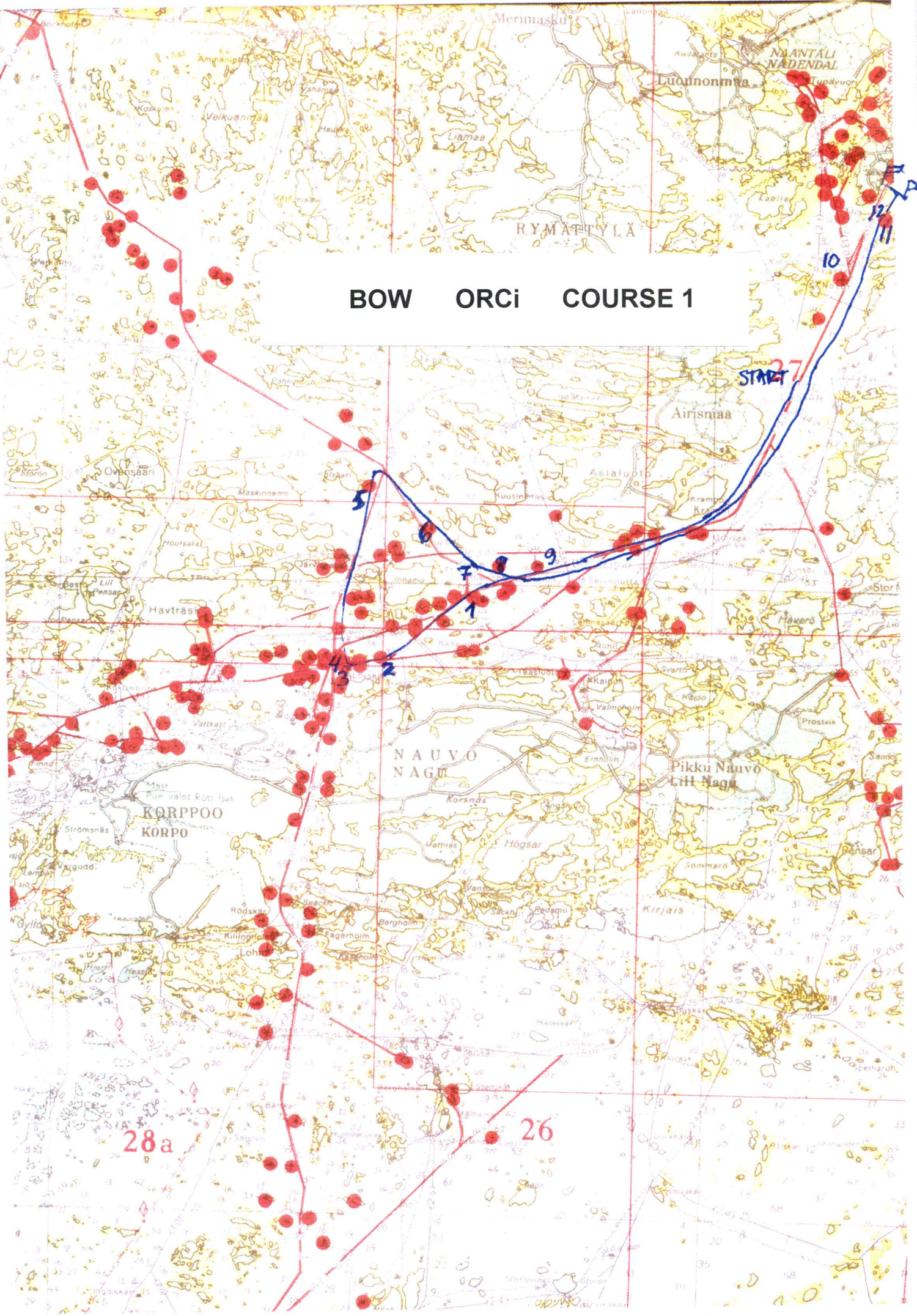
The organizer will try to set up a starting line providing an upwind start.

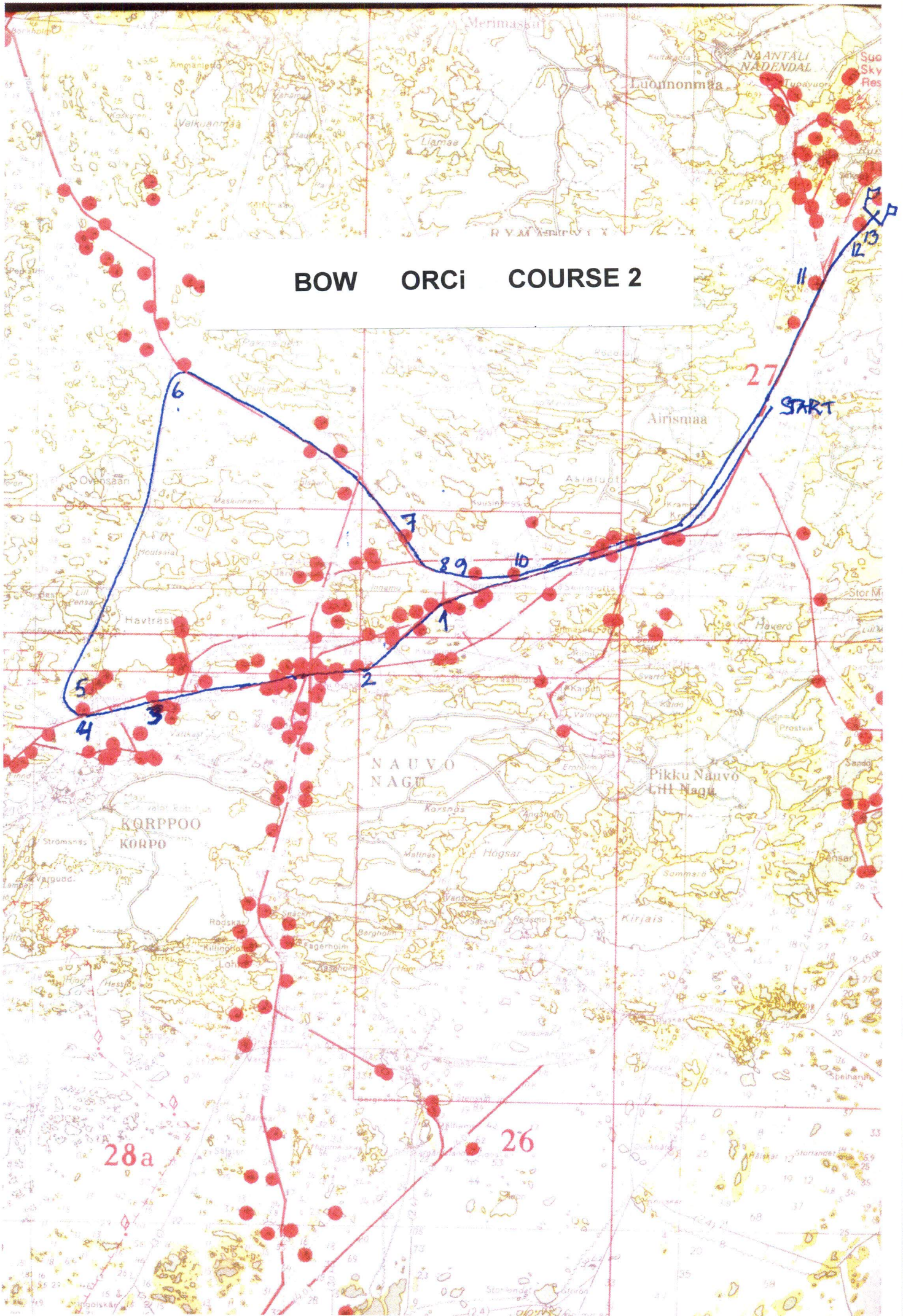
If necessary this may require an extra upwind mark (orange bouy). After rounding this mark the boats may proceed to mark 1 of the proper course.

Coastal courses on 30.7.2015

<b>COURSE 1</b>				<b>COURSE 3</b>			
~34,5 NM				~56,8 NM			
Start	Starting procedure			Start	Starting procedure		
Mark	Description			Mark	Description		
1	Kaskisgrundet	Green buoy	BB	1	Kaskisgrundet	Green buoy	BB
2	1st mark before Lövskär	Port lateral mark	SB	2	1st mark before Lövskär	Port lateral mark	SB
3	SW of Grangrundet	Red bouy	SB	3	SW from Grangrundet	Green buoy	BB
4	W of Grangrundet	W bouy	SB	4	Hållers	Edge mark	BB
5	Kaltsaari Itäniemi	E bouy	SB	5	Västra Gunnkobbarna	shallow waters!	BB
6	Rönngrund		BB	6	Hästarubådan	S bouy	BB
7	W from Stora Äggskär	W bouy	BB	7	Långharun		BB
8	SW from Stora Äggskär	S bouy	BB	8	Byskär		SB
9	Lilla Äggskär		BB	9	Köpmanskär		BB
10	Rajakari		BB	10	Klobbskärsfjärden	S bouy	BB
11	North from Järvistensaari	W bouy	SB	11	Klobbskärsfjärden	E bouy	BB
12	Kauppakari		BB	12	Hallonholm		SB
13	E from Viittakari	Finish line		13	Utterholm		SB
				14	NE from Askgrund	N bouy	BB
				15	Stora Bässholm	W bouy	SB
				16	W from Grangrunden	W bouy	SB
				17	Rajakari		BB
				18	North from Järvistensaari	W bouy	SB
				19	Kauppakari		BB
				20	E from Viittakari	Finish line	
				Short costal course on 1.8.2015			
<b>COURSE 2</b>				<b>COURSE 4</b>			
~49,4 NM				~18,3 NM			
Start	Starting procedure			Start	Starting procedure		
Mark	Description			Mark	Description		
1	Kaskisgrundet	Green buoy	BB	1	W from Orhisaari	2nd green bouy	BB
2	1st mark before Lövskär	Port lateral mark	SB	2	N from Lilla Majholmen	N bouy	SB
3	NW from Stora Björnholm		BB	3	NW from Mellersta Linsor	E bouy	BB
4	S from Kokombrink	Red bouy	SB	4	W from Grangrunden	W bouy	SB
5	W from Hästkär	W bouy	SB	5	Rajakari		BB
6	E from Hevonkack	2 W bouys	SB	6	North from Järvistensaari	W bouy	SB
7	W from Rönngrund	W bouy	BB	7	Kauppakari		BB
8	W from Stora Äggskär	W bouy	BB	8	E from Viittakari	Finish line	
9	SW from Stora Äggskär	S bouy	BB				
10	Lilla Äggskär		BB				
11	Rajakari		BB				
12	North from Järvistensaari	W bouy	SB				
13	Kauppakari		BB				
14	E from Viittakari	Finish line					

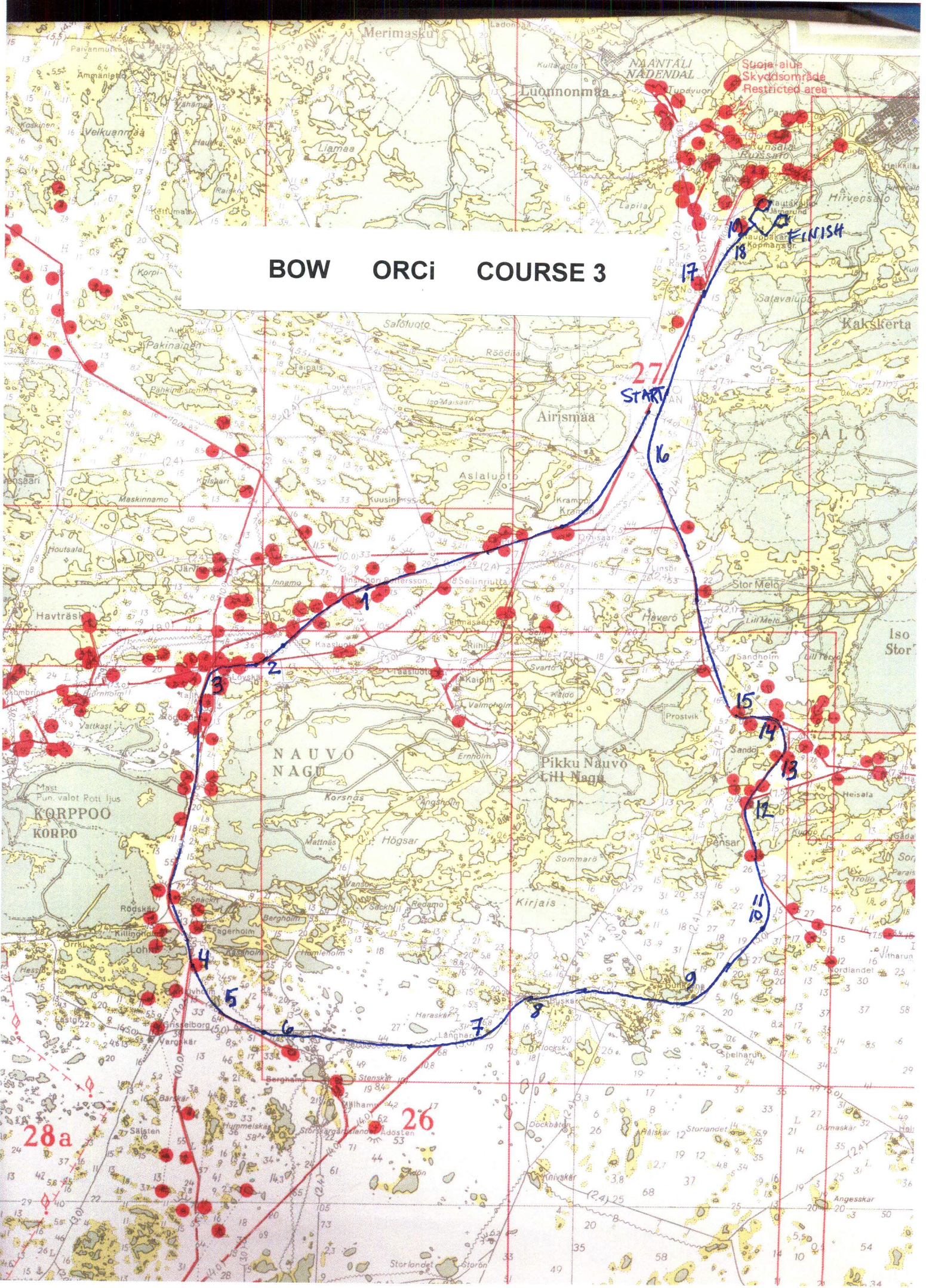
# BOW ORCI COURSE 1

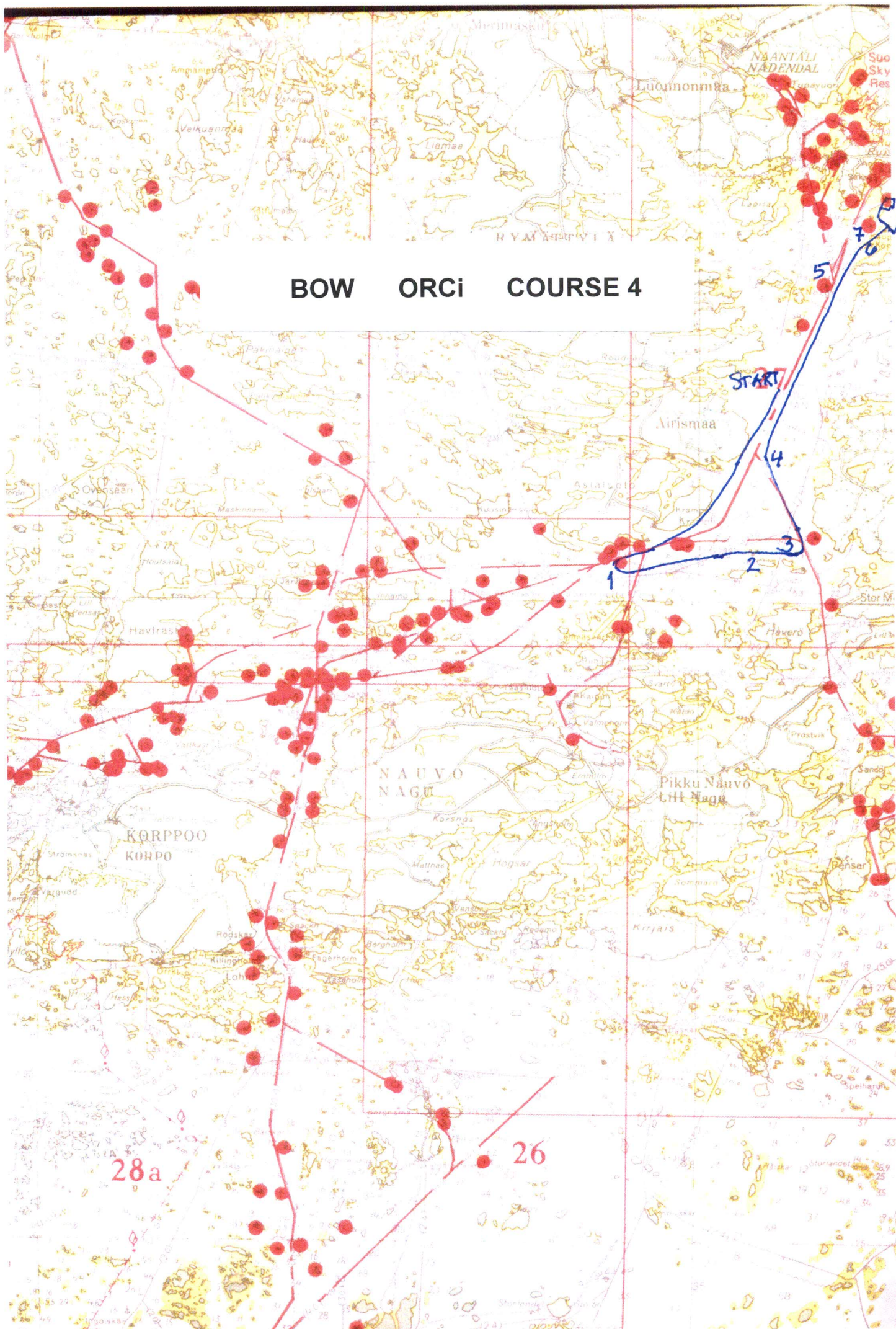




**BOW ORCI COURSE 2**

# BOW ORCi COURSE 3





**BOW ORCi COURSE 4**

START

5

4

3

2

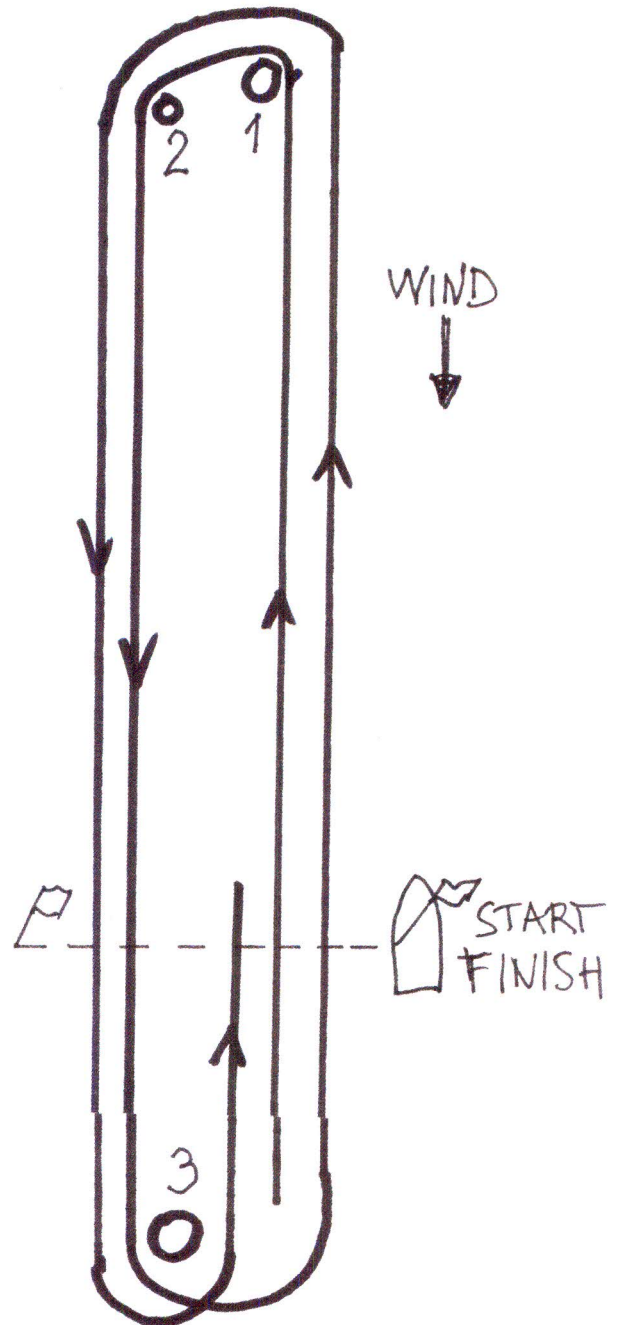
1

28a

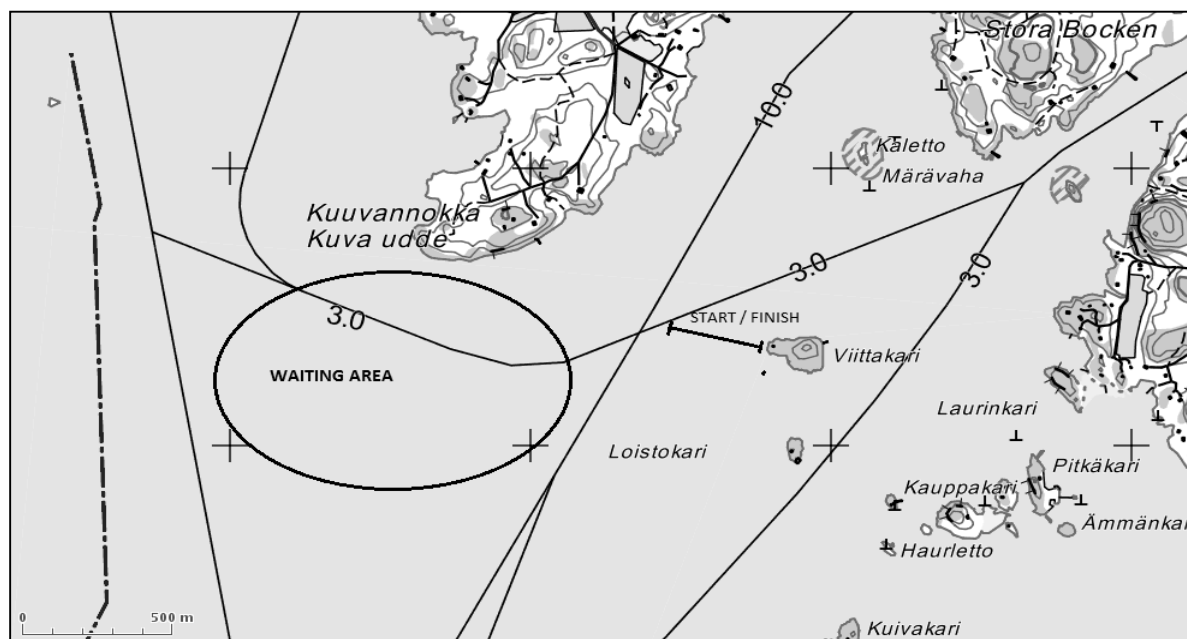
26

# Course for the ww/lw races of the ORCi classes

Course for the classes  
Int 5m, 6mR and 8mR



## BCM courses and marks (Starting and finishing line on Viittakari)



### Course 1 23 NM

- mark 1 green buoy 0,3 NM to SE from Purha (= 2. green buoy to W after Orhisaari), **leave left side**
- mark 2 Majholmen, **leave left side**
- mark 3 Östra Linsör/Linsörarna, **leave left side**
- mark 4 E buoy 0,3 NM to E from Kirveskari /Yxhop, **leave left side**
- mark 5 W buoy 0,4 NM to W from Grangrunden/Lattarna, **leave right side**
- mark 6 Rajakari, **leave left side**

### Course 2 21 NM

- mark 1 green buoy 0,3 NM to SE from Purha (= 2. green buoy to W after Orhisaari), **leave left side**
- mark 2 Orhisaari/Orisgrunden, **leave left side**
- mark 4 E buoy 0,3 NM to E from Kirveskari /Yxhop, **leave left side**
- mark 5 W buoy 0,4 NM to W from Grangrunden/Lattarna, **leave right side**
- mark 6 Rajakari, **leave left side**

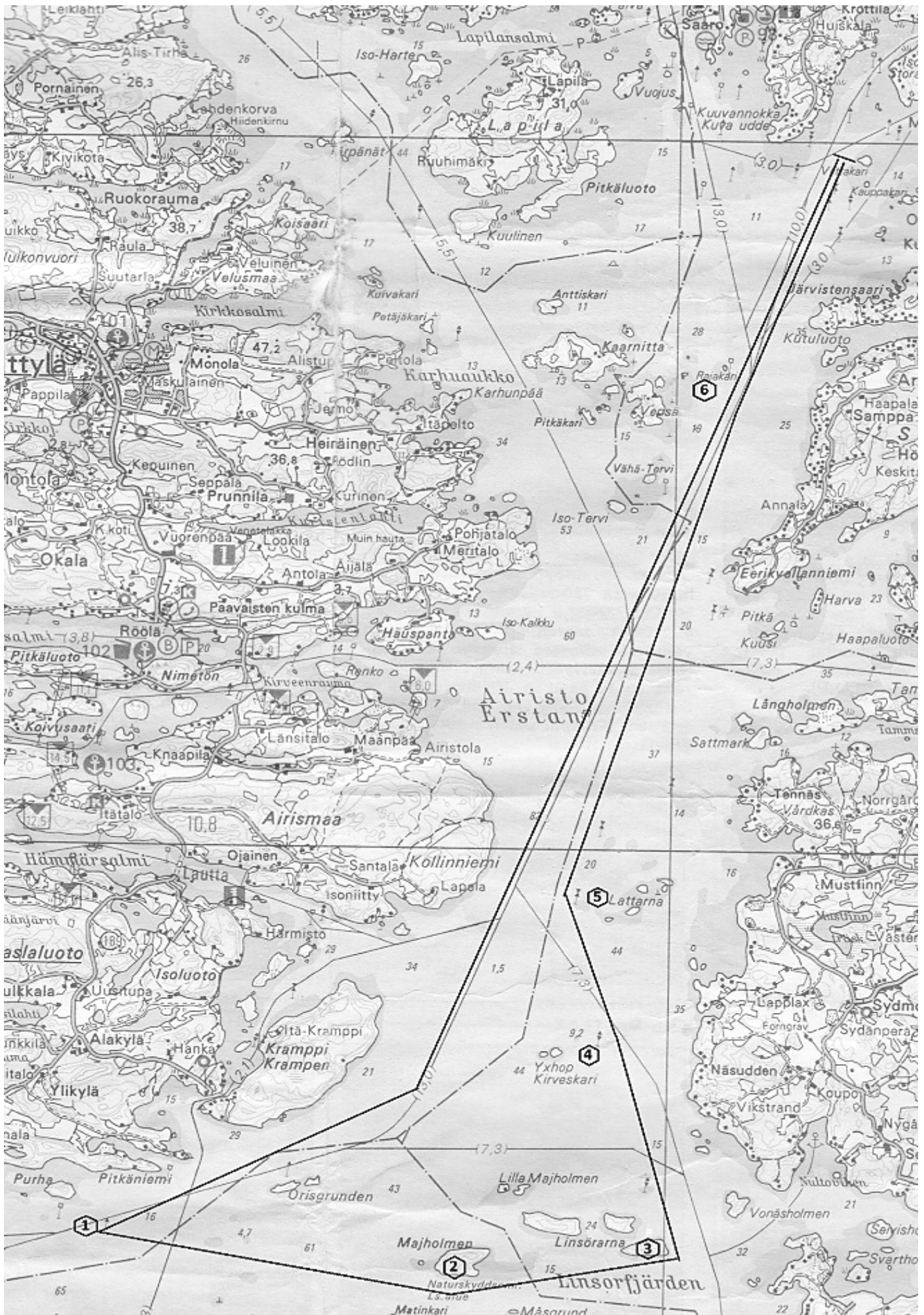
### Course 3 18,5 NM

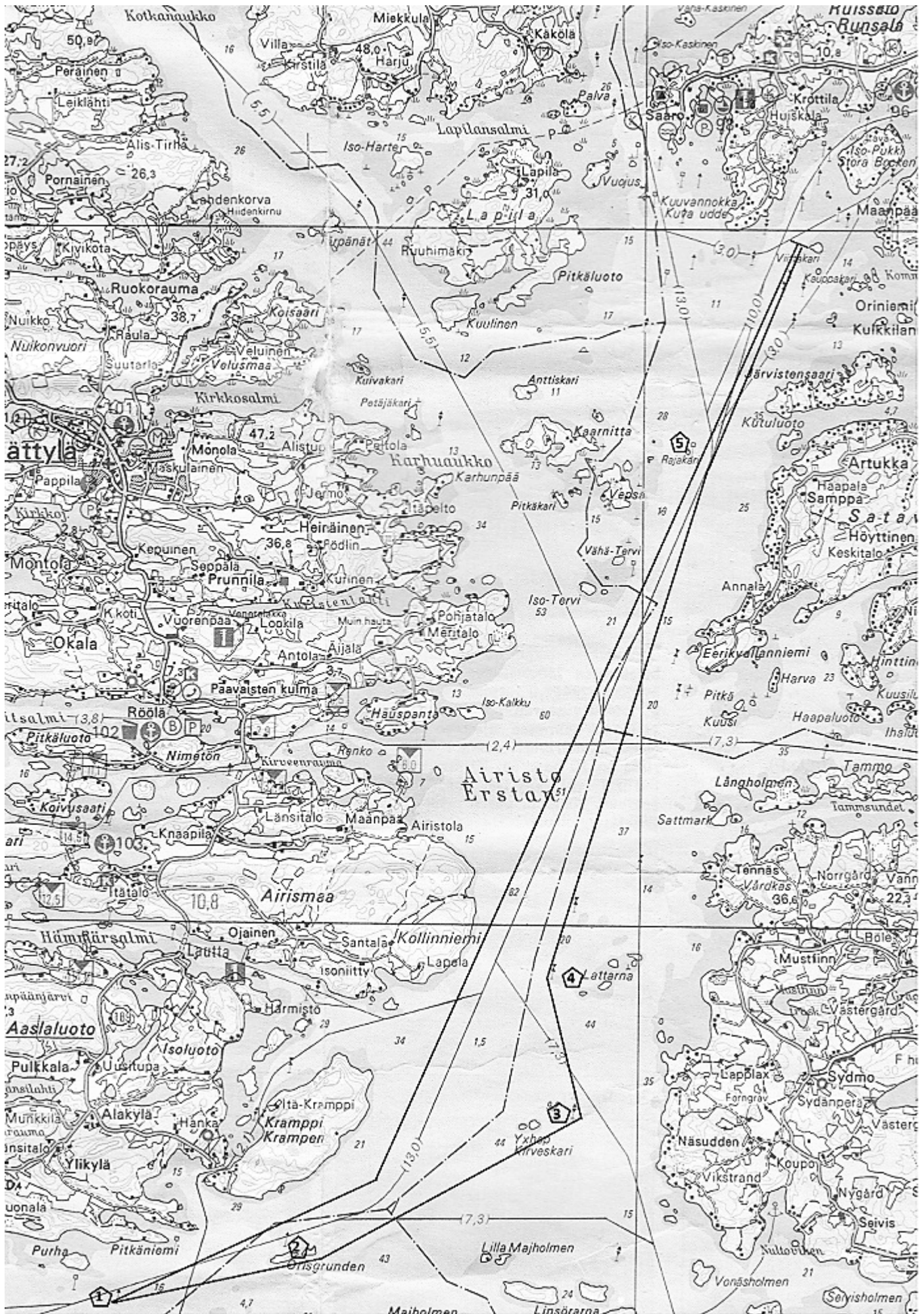
- mark 1 green buoy 0,1 NM to N from Orhisaari /Orisgrunden, **leave left side**
- mark 2 E buoy 0,3 NM to E from Kirveskari /Yxhop, **leave left side**
- mark 3 W buoy 0,4 NM to W from Grangrunden/Lattarna, **leave right side**
- mark 4 Rajakari, **leave left side**

### Course 4 14 NM

- mark 1 W buoy 0,4 NM to W from Grangrunden/Lattarna, **leave left side**
- mark 2 E buoy 0,3 NM to E from Kirveskari /Yxhop, **leave left side**
- mark 3 W buoy 0,4 NM to W from Grangrunden/Lattarna, **leave right side**
- mark 4 Rajakari, **leave left side**

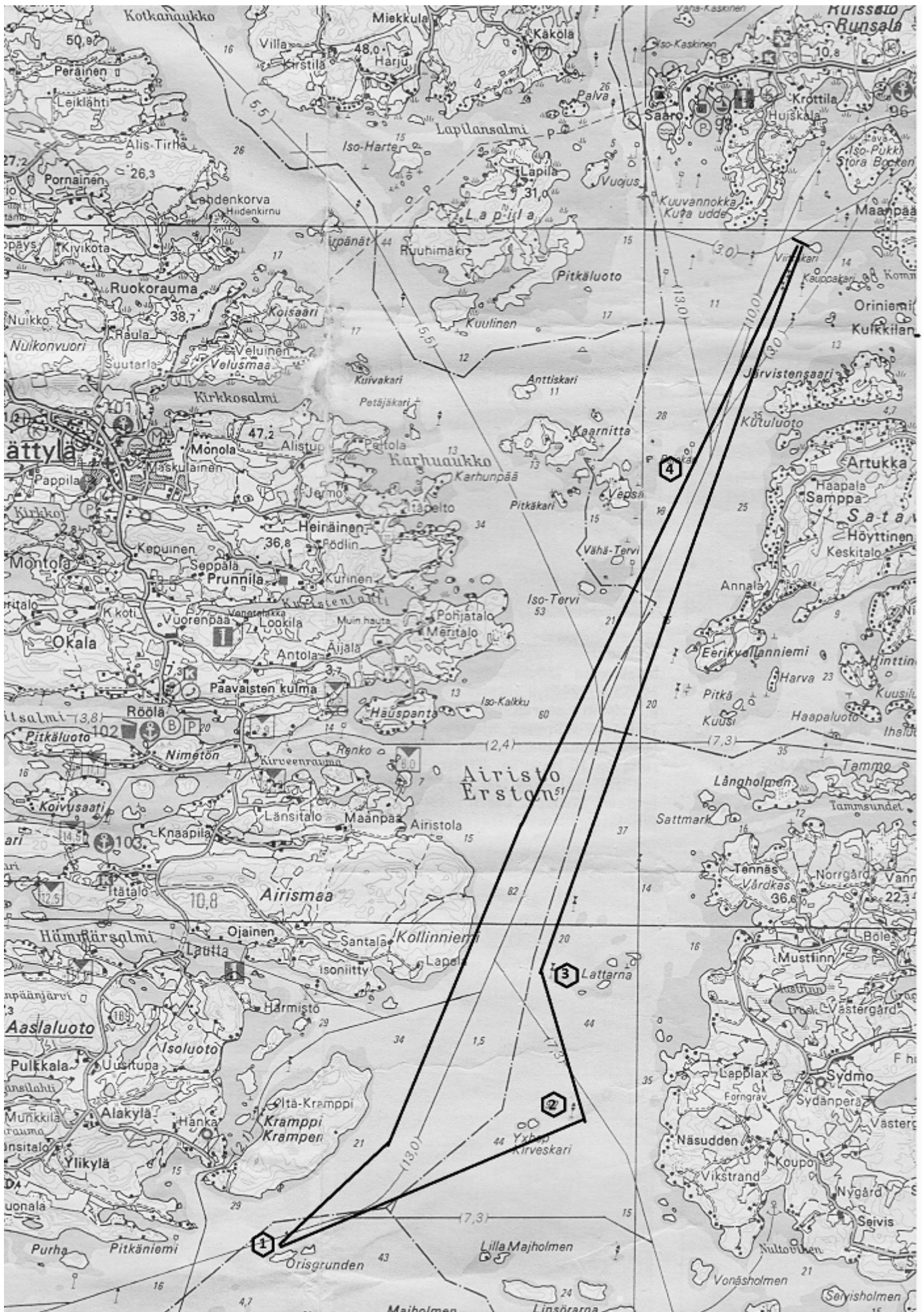






# BCM course 3

# 18,5 NM



# BCM course 4

# 14 NM

